

EDAN Gallery - Exhibition catalogue



EDAN GALLERY
74 Church St, Seaham, SR7 7HF
www.edanart.co.uk
f i

EXTRAVAGANZA

9th June to 25th July 2026

EDAN Gallery
11am to 3pm
Tuesday to Saturday

ALL WELCOME

Find out more about EDAN at www.edanart.co.uk
Cover Artwork by Victoria Leeks, All Rights Reserved

Please return this catalogue for the next visitor.

< 1 2 3 4 5 6 >

001



Poppies
Fused Glass

Ken Maynard

£35.00

Fused glass poppies on a hardwood base.

002



Red Heart Brooch
Ceramic

Victoria Leeks

£5.00

I love brooches and this small red heart brooch is so sweet. it will fit nicely onto a jacket or coat.

003



Tales from the Ash
Wood

John Emerson

£300.00

A log of natural Ash Wood with its knots, curves and remnants of old bark tells the stories of the forest, embedded in the growth rings. Stories of seasons endured, storms survived and years of quiet growth. Now a clock with a dark Cherry Wood face, but also a relic from a world where trees keep their own hours and each growth ring is a chapter of the tree's secret memories.

004



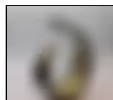
Abstract Chicks
Ceramic and drift wood

Victoria Leeks

£25.00

I love making the mould-made birds. I have used this mould for at least 13 years and it is still going strong.

005



Stardust Sail
Ceramic mixed media

Derek Newton Lynch

£25

My ceramic "Stardust Sail" is my attempt to capture a cosmic voyage. It is made from earthenware then coated in a glossy lacquer with a scattering of gold and silver flecks to bring the galaxy to life.

< 1 2 3 4 5 6 >

006

**Kintsugi Dragon Fly Bowl****Victoria Leeks****£10.00**

Ceramic

Kintsugi roughly translates as 'joining with gold'. This little bowl went into the kiln three times, trying to fix the cracks and glaze. In the end I actually liked the brokenness of the bowl and added the gold, so it was fixed in the Japanese way.

007

**Dragonfly Bowl****Victoria Leeks****£ 10.00**

Ceramic

I made a series of three bowls, they were all meant to be perfect but you can never tell what will come out of the mould and / or the kiln. This one was perfect.

008

**Distorted Dragon Fly Bowl****Victoria Leeks****£10.00**

Ceramic

I made a series of three bowls, they were all meant to be perfect but you can never tell what will come out of the mould and /or the kiln. This one fell when it came out of the mould but I liked it. not everything is perfect but there is beauty in distorted pieces.

009

**Abstract Vessel****Victoria Leeks****£40.00**

Ceramic

I used a lot of surface decoration on this vessel and then a matt glaze to bring out the design

010

**Black Heart****Victoria Leeks****£5.00**

Ceramic

Surface decoration is very important to me in my ceramic work. I love working with lace and then adding a thin layer of glaze so the pattern appears sharp.

< 1 2 3 4 5 6 >

011

**Abstract Brooch****Victoria Leeks****£7.00**

Ceramic

This brooch was also an experiment to see how the dried green glaze, sprinkled on the clay and then clear glaze over the top, worked. Once again, I am pleased with the results.

012

**Doughnut Boy****Victoria Leeks****£60.00**

Ceramic

Influenced by a circular shape when looking through the internet. I wanted to make something outside my usual style but also very me.

013

**'More Please'****Victoria Leeks****£25.00**

Ceramic and drift wood

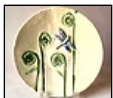
014

**Circle of Blue Sea****Ellen Dorans****£45**

Wall sculpture

I love when light moves around creating unexpected shadowing. This is a small wall sculpture using small glass pieces encapsulated in metal rope which, in the right light, creates shadowing and casts the colour of the glass on the back board.

015

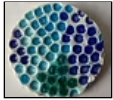
**Fern Platter II****Victoria Leeks****£20.00**

Ceramic

I made a smaller fern platter but used different glazes.

< 2 3 4 5 6 >

016

**Bubble Wrap Brooch****Victoria Leeks****£7.00**

Ceramic

My Bubblewrap brooch was an experiment to see how glass beads melted in indentations of the clay. I am very pleased with the results.

017

**Artemis II vase [small]****Victoria Leeks****£20.00**

Ceramic

This vase was made in response to the latest Nasa moon flyby of Artemis II. I created the vase to look like the surface of the moon, then used a mix of glazes

018

**Seahorse Plaque****Victoria Leeks****£20.00**

Ceramic and drift wood

I love seahorses, they are so magical; so tiny yet larger than life.

019

**Abstract Vase****Victoria Leeks****£15.00**

Ceramic

Using surface decoration and a mix of two glazes, I made this small vase

020

**Fern Platter I****Victoria Leeks****£30.00**

Ceramic

At this time of the year, nature is bursting out. What a wonderful time! I have a large fern that is unfurling its leaves so I wanted to make a platter using the curly fronds before they opened fully.

021



Cumbria
Oils

George Browell

£90

Below Helvelyn, Cumbria in winter

022



Steps at Plas Newydd House, Anglesey
Watercolour

Peter Brewis

£100

This painting looks to capture the architectural drama of these weathered stone steps on a beautiful summer's day. Painted from a photograph taken during a visit last year.

023



Butterfly Blue
watercolour

Carol White

£75

Inspired by summertime and beautiful butterflies. Bright and colourful

024



Bird of Paradise
Watercolour

Peter Brewis

£35

With its bold form and bright colours, this flower is well suited for an exhibition entitled Extravaganza.

025








Butterfly Amber
watercolour

Carol White

£75

Inspired by summer and beautiful butterflies. Bright and colourful

< 4 5 6 7 8 >

026		Doughnut Print Mixed media	Victoria Leeks	£40.00
<p>Extravagance derives from the Italian word 'Stravaganza' meaning extravagant. I have made a ceramic doughnut as part of this exhibition so I wanted to make a print. I went over the top in colours and materials to make it stand out</p>				
027		Scarista Summer pastel	Roger Gadd	£90
<p>This view is of Scarista, Isle of Harris. The wild flowers in the Western Isles add even more to the beauty of this stunning coastline in summer. I painted a plein air watercolour when there really was a gap in the stone wall to lead the eye to the sea and the North Harris Hills. Unfortunately, a new wall has been built since then.</p>				
028		View over Sunderland watercolour	Roger Gadd	£150
<p>A view from Cleadon Hills over Seaburn, Roker and the Durham Coast beyond. My reference was a plein air pastel from October 2025; I wanted to return to using watercolour after a period of several years using mainly pastel and oils.</p>				
029		CONCOCTION Gelli Print	Dawn Routledge	£90
<p>This Matisse influenced piece was inspired by a YeatesMakes blog exploring Matisse. Mark Yeates is a multi media artists who seems to work very often with the gelli plate. Matisse was never one of my favourite artists but I think I am now a convert. The work is titled 'Concoction' because it came through Mark Yeates exploring Matisse to me giving it my own twist.</p>				
030		Pollinator Pathways No 5: Cow Parsley Hand & Machine Embroidery on Painted Canvas	Sandra Totty	Not For Sale
<p>Celebrating the resilience and beauty of wildflowers in untamed landscapes, this series of hand and machine embroidered artworks explores connections between flora, pollinators, and habitat. Intersecting threads symbolize relationships among plants, insects, and wildlife that depend on these environments, while honeycomb patterns represent bees and pollinators vital to ecosystems. The work highlights nature's richness and the importance of protecting habitats they need to survive.</p> <p>Stitched cow parsley flowers stand against a painted hillside, their umbels bringing texture, lightness and movement to the scene.</p>				

< 5 6 7 8 9 >

031

**Sea Knitting****Jac Seery Howard****£280**

Pastel over watercolour on paper.

Another in my 'homages to quayside ephemera' series. Having lived most of my life on the coast I am always inspired by the fishing related items littering harbours - buoys, pots, nets, ropes etc.

032

**Marsden Bay 1990****George Browell****£90**

Watercolour

A watercolour of Marsden Bay before the collapse of the arch that gave this large stack it's distinctive character.

033

**Fingal's Cave, Staffa, Scotland****George Browell****£140**

watercolour

I wanted to capture the grandeur and windswept freshness of this dramatic geological outcrop in the Scottish Isles.

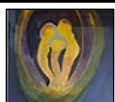
034

**Colourful Crumbling Concrete****Tony Frisby****£50.00**

Photography

This is a photograph of the concrete surround to a waste water outlet on the Red Acre Beach in Seaham. The traces of paint and the iron/rust staining create an interesting abstract pattern and show that beauty can be found in even the most uninspiring places if you look hard enough.

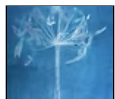
035

**Safety****Jean Spence****£100.00**

Watercolour

This painting is based upon a macro-view of an iris. The colours and shapes evolved into an image of two adults and a child encased in a circular structure which suggested to me a hidden place of sanctuary.

036

**Echoes of Autumn****Nasim Akhtar****£30.00**

Cyanotype

This cyanotype captures a dried Agapanthus seed head, pressed onto the light-sensitive surface to preserve the delicate traces of its final form. Suspended within deep blue tones, the image evokes the quiet transition from growth to decay, carrying the echoes of autumn's harvest. The scattered seeds appear to drift beyond the stem, suggesting movement, dispersal, and renewal. Through the cyanotype process, an ordinary botanical specimen is transformed into a contemplative landscape of memory and change. The work reflects on the cyclical nature of life, where endings become beginnings and beauty persists in the fragile remnants of a passing season.

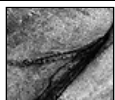
037

**Submerged Memory****Nasim Akhtar****£30**

Cyanotype

This cyanotype captures the shadow of pressed seaweed, preserving its delicate form through the interaction of light, chemistry, and natural materials. The deep blue tones create the illusion of looking into the sea, where the seaweed appears suspended beneath the surface in almost indigo water. Variations in tone and texture evoke shifting currents, bubbles, and microscopic marine life, drawing the viewer into an imagined underwater landscape. By transforming a small piece of seaweed into a vast seascape, the work explores perception, scale, and our connection to coastal environments, revealing beauty hidden within ordinary natural forms.

038

**Trunk - Tree or Elephant ??****Tony Frisby****£50.00**

Photography

Abstract photography (particularly monochrome) relies on the subject having interesting variations in shapes, textures, patterns and shade/colour. This means that the actual subject being photographed can be rendered trivial, leaving the viewer guessing as to what they are actually looking at.

039

**Satin Skin****Lesley Wood****£90**

Hand embroidery


Satin Skin features the profile of a woman, hand embroidered within a blue painted circle on patterned satin fabric. The satin's pattern has been picked out and stitched using metallic threads. Partly merging the portrait with the background, a further piece of decorative lace has been appliquéd to the woman's hair. Embroidery stitches form a frame around the circumference of the blue circle.

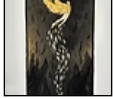
040


**Striking A Pose****Lesley Wood****£98**


Hand embroidery


Striking A Pose features the profile of a woman, hand embroidered in mostly blue and gold metallic threads. She has a large glitzy hair clip and earring stitched onto hand dyed reclaimed table linen. It is an extravagant look with blue and gold stars floating around the picture.

041		Blues Singer Hand Embroidery	Lesley Wood	Not For Sale
<p>The head of a female Blues Singer, hand embroidered onto fragments of cyanotype fabric and embellished with ribbons, sequins and embroidery stitches to create an energetic composition. All in shades of blue.</p>				

042		Icarus Textile Quilt	Lesley Wood	£150
<p>Icarus is a textile quilt that features Icarus a figure in Greek mythology who famously is known for flying too close to the sun. The quilt is constructed using layers of black and gold coloured fabrics and appliqué stitching techniques.</p>				

043		Whale 4 ceramic	Kay Holborn Bond	£195
<p>The works in this series are inspired by engineering drawings which have then been twisted and stretched to take on their own meaning.</p>				

044		Liquid light mixed media	Jean Spence	£60.00
<p>The image is derived from my experience of walking Seaham beach at sunrise when the tide is low. The light on the water on the exposed rocks reflects the low sun in the east, changing the colours of the rocks and producing highlights that contrast powerfully with the dry areas of rock. .</p>				

045		Whale 2 Ceramic	Kay Holborn Bond	£185
<p>The shapes in this piece of work come from engineering drawings. The shapes are twisted and stretched to give them a new life and meaning of their own. The title of the work comes from an overwhelming response to the first piece in this series which was repeatedly remarked upon as looking like a whale. Any whale similarities are in fact pure coincidence!</p>				

046

**Whale 3**

ceramic

Kay Holborn Bond**£175**

The shapes in this piece of work come from engineering drawings. The shapes are twisted and stretched to give them a new life and meaning of their own. The title of the work comes from an overwhelming response to the first piece in this series which was repeatedly remarked upon as looking like a whale. Any whale similarities are in fact pure coincidence!

047

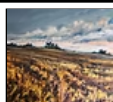
**Beautiful Blast Beach Boulder**

Photography

Tony Frisby**£50.00**

This photograph is of a rock boulder found on the Blast Beach near Seaham. The variations in colour and texture caused by different materials within the rock and the way they have been stained and weathered creates a unique, interesting and attractive abstract pattern.

048

**Evening**

Oil on canvas

Roger Gadd**£90**

Inspired by both the gorse which grows on the cliffs above the Blast Beach, Seaham and dramatic oil paintings by Jill Eisele, usually of landscapes in Cornwall.

049

**Flotsam or Jetsam ?**

Photography

Tony Frisby**£50.00**

This is a photograph of a discarded plastic storage drum on Seaham's Blast Beach that has been stained, scratched, scarred and scoured by the sea. We'll never know, but, in common with many objects found on the Blast Beach, it's fascinating to speculate as to where this item has come from: was it discarded by accident or on purpose?, did it originate from the land or come from a ship? Either way, the marks and colour variations caused by the weathering of the plastic make an interesting and colourful abstract pattern.

050

**Cousins in a Landscape**

Hand Embroidered Textile

Neida Pearson**£180**

Two young women dressed as geishas in a Japanese inspired landscape.

051

**Ambivalent****Angela Sandwith****£120**

Hand embroidery on organza and found materials

My love/hate relationship with hand embroidery, in particular the stitch known as a French Knot has been challenged in this work. Finding a thick scrap piece of paper on the beach was the starting point. The juxtaposition of the scrap paper against the lush organza, which has been manipulated and distressed with heat; creates a visual and tactile contrast. Time-intensive hand embroidery elevates the discarded scrap paper into an intentional and precious piece of art.

052

**Three Trees****Peter Brewis****£140**

Watercolour

Bursting with colour, this abstract painting shows trees transformed into living mosaics of life, reaching across the sky.

053

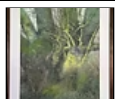
**Pollinator Pathways No 1: Rosebay Willow Herb****Sandra Totty****Not For Sale**

Hand & Machine Embroidery on Painted Canvas

Celebrating the resilience and beauty of wildflowers in untamed landscapes, this series of hand and machine embroidered artworks explores connections between flora, pollinators, and habitat. Intersecting threads symbolise relationships among plants, insects, and wildlife that depend on these environments, while honeycomb patterns represent bees and pollinators vital to ecosystems. The work highlights nature's richness and the importance of protecting habitats they need to survive.

Rosebay Willowherb is known for quickly colonising disturbed ground, symbolising renewal, resilience and nature's ability to recover and thrive. Tall stitched flower spikes rise through the painted landscape, adding colour, movement and vitality to the scene.

054

**Natural Display****Bill Holmes****£300**

Oil on board

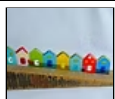
Natures creation is truly extravagant, its palette is varied and subtle and its forms, structures and textures are wondrous beyond the wit of human creativity.

I look at nature in all its complexity, from sky, land and sea and I'm always in awe at its creative diversity.

Colours and forms always seem to be well placed and any alteration seems almost criminal.

Extravagant is a term which truly captures the creativity of nature in all its glory.

055

**Beach huts****Ken Maynard****£35.00**

Fused glass on driftwood

Eight tiny fused glass beach huts jostling for position on a lovely driftwood 'wedge'.

056

**Teasel Vessel****Victoria Leeks****£30.00**

Ceramic

I have Teasels growing wild in my garden and they are just coming into flower, so I decided to make a Teasel vessel in bloom and then made the inside pale lilac to make the pot sing.

057

**Kelp Twisted Circle****Ellen Dorans****£45**

Wall Sculpture

I love when light moves around creating unexpected shadowing. This is a small wall sculpture, inspired by the Kelp project, using metal wire rope with glass inclusions which, in the right light, creates shadowing, casting the glass colour on the back board.

058

**Oystercatcher feeding on Seaham beach****Ken Maynard****£30.00**

Fused glass

A fused glass piece of a lovely Oystercatcher spotted feeding at Seaham Beach. Mounted on a weather-worn sandstone pebble.

059

**Copper Traces****Jeanet Ingwersen****£40**

Ceramic

Hand-thrown bowl in white stoneware finished in a soft transparent glaze with copper-derived markings around the rim. The pattern offers a quiet form of extravagance—small moments of depth, colour and variation that emerge from the firing process. Each mark is unique, celebrating the beauty of subtle detail in everyday objects.

060

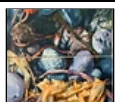
**Bronze Arc****Derek Newton Lynch****£25**

Ceramic mixed media

I like my sculptures to be fluid and have a flowing shape, hopefully resembling some form of motion. With "Bronze Arc" I tried to make it resemble a sweeping crescent and to make it reflect the metallic gold in light by using a gloss lacquer, as opposed to glazing.

< 11 12 13 14 15 >

061



Kelp Washed In

John Thirlwall

£400

Oil

This was made from drawings done on a visit to Craster, Northumberland. It was the fourth painting of the 'Kelp' project. It is presented as a diptych.

062



Breaking Free

John Thirlwall

£525

Oil

The plants between the rocks were revealed as the tide receded on the rocks at Craster, Northumberland, leaving a beautiful display of colour.

063



Irises, Barra

Roger Gadd

£150

watercolour

Flag irises provide a splash of yellow in early summer in the Western Isles. This view is from the edge of the Traigh Mhor, where the plane from Glasgow lands, towards Skye. And, yes, the sand and sea really are those colours!

064



Summer Vibes

Carol White

£125.00

watercolour

The colours, the light and shadow, as seen in the garden on a lovely summer's day.

065



Los Alisios 1

Angela Sandwith

£80

digital photo

Capturing the light and wind on the Canarian island of Fuertaventura has always been a challenge to me. The trade winds, Los Alisios are constant and of varying strengths. The more energetic Calima wind brings a rise in temperature and sand from the Sahara.

In May 2025 the trade winds were particularly strong with the light and beach changing constantly.

These images were taken on an east coast beach over 2 hours. None of the images have been digitally manipulated.

066



Los Alisios 2
digital photograph

Angela Sandwith

£80

Capturing the light and wind on the Canarian island of Fuertaventura has always been a challenge to me. The trade winds, Los Alisios are constant and of varying strengths. The more energetic Calima wind brings a rise in temperature and sand from the Sahara.

In May 2025 the trade winds were particularly strong with the light and beach changing constantly. These images were taken on an east coast beach over 2 hours. None of the images have been digitally manipulated.

067



Moon Rise
Hand sewn textile

Jean Spence

£350.00

This textile is based on a composite of memories from mid-summers spent in the Isle of Skye watching moon, mountains and loch.

068



Nestled
Pastel on paper in bespoke frame

Jac Seery Howard

£300

Another in my 'homages to quayside ephemera' series. As a coastal dweller I am always fascinated by old ropes, pots, buoys and other fishing related items.

069



Pollinator Pathways No 3: Thistle
Hand & Machine Embroidery on Painted Canvas

Sandra Totty

Not For Sale

Celebrating the resilience and beauty of wildflowers in untamed landscapes, this series of hand and machine embroidered artworks explores connections between flora, pollinators, and habitat. Intersecting threads symbolise relationships among plants, insects, and wildlife that depend on these environments, while honeycomb patterns represent bees and pollinators vital to ecosystems. The work highlights nature's richness and the importance of protecting habitats they need to survive.

Vibrant thistles grow in a painted wilderness, showing how nature can thrive when it is left alone.

070



Pollinator Pathways No 4: Heather
Hand & Machine Embroidery on Painted Canvas

Sandra Totty

Not for Sale

Celebrating the resilience and beauty of wildflowers in untamed landscapes, this series of hand and machine embroidered artworks explores connections between flora, pollinators, and habitat. Intersecting threads symbolise relationships among plants, insects, and wildlife that depend on these environments, while honeycomb patterns represent bees and pollinators vital to ecosystems. The work highlights nature's richness and the importance of protecting habitats they need to survive.

Inspired by heather-covered landscapes, this hand and machine embroidered artwork highlights the value of wild habitats with stitched heather flowers growing across a painted moorland, adding colour and texture to the scene.

071



Dunker
Ceramic

Victoria Leeks

£45.00

This piece and the free standing piece were influenced by another artist on the internet. Unfortunately no name was given to this piece. I liked the form and the idea that I could make this using my own style. This is a half doughnut so that I could frame it.

072



Colour Chaos.
Acrylic paint and ink on paper

Ellison Lockwood

£45

This is from a series of squeegee paintings I did to experiment and see how the colours react when contacting each other.

073



Prayer
graphite and soft pastel

Danny Gilchrist

£300

Hugh asked me to draw his hands in prayer as a sign of his changed life. Brought up in the Gorbals in Glasgow, Hugh readily admitted that he had a bit of a reputation as a fighter. It was only when he came to live in the North East and met his partner that his life began to change for the better.

074



Wings
Pen - biro, fineline and Posca

Danny Gilchrist

£250

Sometimes it is good to revisit an artwork. This drawing was started 50 years ago when I was suddenly rushed into hospital. It was found recently in an old portfolio from my art college days. I decided to update it - and so here it hangs.

075



Ruth Knitting
graphite and soft pastel

Danny Gilchrist

£300

The click clack of knitting needles is a soothing sound, it conjures up so many memories of aunties and grandmothers sitting and chatting while they created scarves, socks or jackets for babies. Ruth knits Fair Isle cardigans, hats and gloves while I sit and draw.

< 14 15 16 17 18 >

076

**The Way We Were****Jean Spence****£120**

Ink on paper

077

**Seaham Graffiti No1****Anthony Carr****£240.00**

Mixed Media

For the "Extravaganza" exhibition I wanted to take the opportunity to lean into my Street Art background and create a small Graffiti style text piece celebrating the seaside town of Seaham.

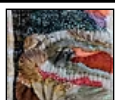
078

**Wild Algarve - A Ship Sails By****Neida Pearson****£160**

Hand Embroidered Textile

This piece is inspired by my recent holiday in Portugal. I have used several photos taken while walking along the cliff paths of The Algarve to create this piece and create a taste of the area.

079

**Broken Shell - The Algarve****Neida Pearson****£160**

Hand embroidered Textile

Using several photos taken on a recent holiday I created this piece. It shows sunrise over the sea. As the title suggests, I have used a broken shell as part of the wild waves. As in Japan, I decided to enhance its damage by sewing it with gold thread, making it a feature of my work.

080

**Window at Penrhyn Castle****Peter Brewis****£150**

Watercolour

This painting looks to capture a moment of timeless elegance and quiet grandeur in this stunning mock castle. Painted from a photograph taken during a visit last year.

< 15 16 17 18 19 >

081

**Hawthorn Hedge****Bill Holmes****£200**

Oil on board

082

**Rock Face****John Thirlwall****£750**

Pastel

This was drawn on site on holiday in Kaunos, Turkey. It is a cliff face we found when out walking. I drew this in pastel as it was easier for transportation.

083

**Carousel Colt****Carol White****£110.00**

pigment inks and watercolour

Extravaganza conjured up thoughts of the fairground and then the ornate carousel rides. What was better than to ride the carousel horses as a child, imagining a world of make believe and galloping off on the excitable colt.

084

**Shattered****Peter Brewis****£75**

Fineliner and Promarkers

Composed of hundreds of dynamic geometric shapes, I'm hoping this submission delivers a burst of colour and joyful energy.

085

**Early Start****Roger Gadd****£90**

oil on canvas

Bright colour in winter! This painting was inspired by a photograph, taken by my artist friend, Jean Spence. She was showing the effect of frost on her windscreen which had to be scraped off at sunrise on a winter morning. It suggested a semi-abstract painting to me immediately.

086



The Weight of
Acrylic and Sand

Claire Smithson-Homer

£125

Inspired by emotion and inner turbulence, light breaking through the darkness represents both disruption and hope.

087



Colour blend
acrylic paint and ink on paper

Ellison Lockwood

£45

Again from a series of squeegee paintings,

088



May Morning
oil on canvas

Roger Gadd

£150

My pastel reference for this oil painting was painted on a slightly hazy May morning on Belford Moor in North Northumberland. The view is towards Wooler and the Cheviots and the bursts of colour are provided by gorse and cow parsley in flower.

089



Pollinator Pathways No 2: Wild Foxglove
Hand & Machine Embroidery on Painted Canvas

Sandra Totty

Not For Sale

Celebrating the resilience and beauty of wildflowers in untamed landscapes, this series of hand and machine embroidered artworks explores connections between flora, pollinators, and habitat. Intersecting threads symbolise relationships among plants, insects, and wildlife that depend on these environments, while honeycomb patterns represent bees and pollinators vital to ecosystems. The work highlights nature's richness and the importance of protecting habitats they need to survive.

This artwork explores wild foxgloves, their tall stitched flower spikes rising through grasses and plants to create a focal point. An important nectar source for bees and pollinators, they highlight native wildflowers' role in supporting biodiversity.

090



Between Seasons
Acrylic and sand

Claire Smithson-Homer

£125

A textured reflection on transition and stillness, this piece explores the quiet space between endings and beginnings.

< 16 17 18 19 20 21 >

091

**Geometry of the Threshold****John Emerson****£320.00**

Wood

The title of the work is based on the reclaimed oak flooring and the reclaimed timber from a front door where the two structures meet to create the Threshold. Each piece is hand-cut and arranged to create a sun-burst geometric pattern. The pieces hold the stories of the people who have passed through the door and left the echo of their footprints across the floor.

092

**Doughnut Boy II****Victoria Leeks****£50.00**

Ceramic

This piece was made with flora and Forna in mind. It was difficult to make and to get it just right.

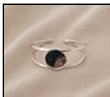
093

**Shoreline****Rosa Fox****£173**

Recycled sterling and 925 silver.

Handwoven in recycled sterling silver using the ancient Viking knit technique, Shoreline is finished with a sandcast pebble pendant inspired by weathered stones and shifting tides. Rooted in history yet quietly contemporary, the piece celebrates simple forms, natural textures and understated extravagance.

094

**Moon Feast Bangle****Rosa Fox****£85**

Recycled silver

Crafted from the bowl of an antique silver spoon, this bangle transforms a once everyday object into a bold wearable piece. Part of the Extravaganza collection, it draws inspiration from shared tables, celebration and silver shaped by hand.

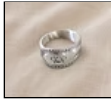
095

**Silver Eclipse****Rosa Fox****£170**

Antique sterling teaspoon with recycled silver.

Handcrafted in recycled sterling silver, Eclipse transforms an antique silver spoon into a sculptural pendant with a quiet sense of elegance. Inspired by ceremonial adornment and the shifting light of an eclipse, the piece reflects transformation and strength.

096

**Revel ring**

Rosa Fox

£40

Antique silver spoon

An antique silver spoon reworked by hand into a wearable heirloom.

097

**Silver Stem Earrings**

Rosa Fox

£35

Silver

Simple, timeless and quietly unique. Technique- using all of the antique spoon creating an elegant pair of stem earrings.

098

**Feastbound**

Rosa Fox

£180

Antique sterling teaspoons and recycled silver.

Handcrafted from recycled sterling silver antique spoons, this piece reimagines forgotten objects into wearable sculpture. Inspired by gathering, ritual and quiet extravagance, the softened silver forms create a bold yet elegant statement, rooted in history and renewal.

099

**Driftwood Plant Stand**

John Emerson

£280.00

Wood

The base of the stand is the natural shape of the roots of the tree with its raw natural twists and hollows, sculpted and smoothed by the waves, salt and sand. The cherry top retains the cross-sectional irregular shape of the tree with a smooth silky finish on the surface. A living house plant is a continuation of the life of the of the driftwood root, a memory of life long past. In Old English folklore, Cherry wood is a symbol of renewal and is thought to ward off restless spirits.

100

**Basalt & Iron**

Jeanet Ingwersen

£85

Ceramic

Hand-thrown stoneware bowl exploring extravagance through texture. The smooth, dark, reflective, iron interior sits within a contrasting rugged outer surface reminiscent of weathered rock and cooled lava. The piece invites closer attention, revealing richness through its tactile qualities and subtle shifts in tone.

< 16 17 18 19 20 21 >

101



Unity Vessel

Victoria Leeks

£40.00

Ceramic

This piece was developed from a coaster I bought. A touch of colour in the centre brings the vessel alive