

EDAN Gallery - Exhibition catalogue

KELP

10th March -
25th April

Open 11am-3pm
Tuesday to Saturday

EDAN GALLERY
74 Church St, Seaham, SR7 7HF

All Welcome

EDAN GALLERY
www.edanart.co.uk

Stronger Shores
Stronger Shores is funded by Defra as part of the Flood and Coastal Resilience Programme.
www.strongershores.com

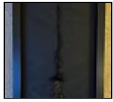
Department for Environment Food & Rural Affairs
Environment Agency
Flood and coastal resilience innovation programme
Flood and coastal innovation programmes

North Sea Wildlife Trusts
Artwork By Anthony Carr
Photo Credit: Anthony Carr

f i

Please return this catalogue for the next visitor.

01

**The Strandline at the Wherry.**

Ellison Lockwood

Not for sale

Mixed media

Salvaged seaweed and material collected from the strandline at the Wherry (a cove near Souter Lighthouse). The idea was to create a piece of work in the style of Aboriginal Art with an industrial feel.

02

**The Strandline, Seaham Beach**

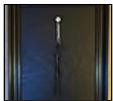
Ellison Lockwood

not for sale

mixed media

A collection of materials and kelp, creating a likeness to Aboriginal art influenced by the field trip by Stronger Shores.

03

**The Strandline at Craster.**

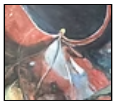
Ellison Lockwood

not for sale

mixed media

Influenced by the field trip to Craster for the stronger Shores project and also by aboriginal art, and beachcombing the strandline collecting materials for my artwork.

04

**Transforming**

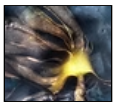
Jean Spence

£60.00

Watercolour

The research for the Kelp exhibition involved a great deal of close looking. This was aided by macro-photography which revealed features of the kelp not readily apparent to the casual observer. My macro-images provided the material for developing a series of watercolours based on the range of patterns, colours and textures apparent in the kelp. This one in addition resembled a butterfly-like insect emerging from darkness into light.

05

**Our Hidden Protector**

Tony Frisby

£40.00

Photography

Kelp photographed on the foreshore at Craster. The fronds were underwater and this seems too have resulted in a gentler, softer image with a sense of movement which reflects the way that kelp moves and is at the mercy of the tides and currents of the sea.

06



Corbie in Kelp

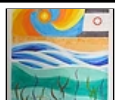
Wet lino print

Jean Spence

£60

Corbies (crows) are a common feature on North Sea beaches. They are well camouflaged as they root for food amongst the kelp thrown up by the tide and on the rocks. This crow emerged in the process of carving and printing a piece of lino. The original image was meant to be only of kelp on the shore, but the space in the curve of the foreground kelp piece created an image of a crow's head that is initially hidden from view.

07



Roll On, You Deep Blue Sea

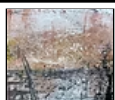
Watercolour

Peter Brewis

£100

This abstract painting of Seaham pier and lighthouse aims to act as a visual representation of the Stronger Shores project, highlighting the benefits of man-made solutions and nature working together. What happens below supports what stands above.

08



Tidebound Dawn

Acrylic, black ink, pencil & gelli printing

Nasim Akhtar

£80.00

'Tidebound Dawn' captures the stillness of early morning along the coast, that quiet moment when the world hovers between night and day. The layered textures were created through gel printing with spongy kelp leaves, whose organic patterns echo the subtle movement of seaweed beneath the tide. Warm golden browns sweep across the surface, suggesting water and shoreline touched by the first light of morning. These luminous tones are interrupted by black ink markings that introduce depth and structure, hinting at the forms of the shoreline and distant land. The natural impressions left by the kelp create a tidal texture that moves across the composition. Through its abstract language, the piece evokes atmosphere, light, and memory, recalling the quiet experience of standing at the shore at dawn, where land, water, and sky slowly emerge from darkness.

09



Kelp Study 4

Mixed media textiles

Lesley Wood

£45

An abstract hand stitched mixed-media collage inspired by kelp and magnesian limestone, focusing on colour, shape and texture.

10




Kelp Study 1

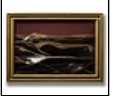
Mixed media textiles


Lesley Wood


£45


A semi-abstract hand embroidered mixed media collage of kelp, focusing on colour, shape and texture.

11		Below the Surface Textile	Jean Spence	£200.00
<p>Hand-sewn textile representing kelp, oysters, and the profusion of life just off our coast that is working below the surface to calm the strength of the waves which are so destructive of our coastline.</p>				

12		Dunstanburgh Kelp Acrylic Paint on Canvas	Anthony Carr	£150.00
<p>When looking closer at kelp you might notice shapes and textures that share a resemblance to the animals and creatures that also live in and around the ocean. Maybe you can make out an ankle of a seagull or the skin of a whale, kelp even takes on a shape similar to waves or a seascape, as if it has adopted various characteristics of other sea life to give it the best possible chance to live and thrive successfully in its environment.</p>				

13		Thetis Mixed media textiles	Lesley Wood	Not For Sale
<p>This is my hand embroidered interpretation of the sea goddess Thetis emerging from a forest of kelp. In Greek mythology, Thetis is best known as the mother of Achilles who she tries to protect during the Trojan war. As a protective sea goddess it seemed appropriate to reference her in this project about the protective qualities of Kelp.</p>				

14		Neptune Mixed media textiles	Lesley Wood	£398
<p>This is my hand embroidered interpretation of Neptune emerging from a forest of kelp. For centuries this allegorical figure of a sea god with his trailing seaweed hair and beard has symbolised the seas' rich bounty and power.</p>				

15		Kelp Abstracted 2 Gelli Print	Dawn Routledge	£30
<p>There are many types of kelp and I have tried to capture some of these on the gelli plate using actual kelps</p>				

16		The Underwater Forest Acrylic paint	Claire Smithson-Homer	£100.00
-----------	---	---	------------------------------	----------------

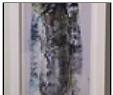
This abstract work explores the underwater world of kelp forests as places of quiet strength and resilience. Layered textures and muted green-blue tones evoke slow movement, filtered light, and the sense of being held beneath the surface. The painting reflects kelp as both environment and metaphor — adaptable, grounding, and enduring in shifting conditions. Created through an intuitive, sensory-led process, the work draws on lived experience of heightened perception and regulation, inviting the viewer to pause, breathe, and experience the restorative calm of submerged spaces.

17		Kelp 2 Gelli Print	Dawn Routledge	£30
-----------	---	------------------------------	-----------------------	------------


There are many types of kelp and I have tried to capture some of these on the gelli plate using actual kelps

18		Whirlpool Oil on board	Bill Holmes	£200
-----------	--	----------------------------------	--------------------	-------------


Studying the shape and form of kelp and seaweed is fascinating in itself, but looking into this pool containing seaweed it took on new meanings and dimensions. The 'movement' of the seaweed forming around the central coil seems to order itself into a definite whirlpool formation.


19		Kelp Abstracted 1 Acrylic on mountboard	Dawn Routledge	£30
-----------	---	---	-----------------------	------------


This is an abstracted depiction of a common kelp that is often found on the seashore


20		Awesome Algae Photography	Tony Frisby	£40.00
-----------	---	-------------------------------------	--------------------	---------------


Kelp washed up on the Longsands Beach in Tynemouth. The way that the kelp has been left by the tide leaves the three distinct parts in clear view - the holdfast that anchors the kelp to the sea bed, the stipe or stem and the blades or fronds. I love the pattern made by the fronds and the subtle variation in shades of brown, particularly when set against the desaturated sand background.

21		Tangilen 1 kelp,manipulated,pinned,dried on steel	Angela Sandwith	NFS
<p>This work was developed from explorations into manipulating and drying kelp. I have experimented with kelp as a material, and I am fascinated by the way it transforms, changes state and becomes hard and strong as it dries out. The addition of moisture restores it back to its original state. Upcycled steel was selected as a background because of the way it has started to develop a rusty patina which links to transformation and change of state.</p>				

22		Buffer 1 manipulated and pinned dried kelp	Angela Sandwith	nfs
<p>This work is a development from explorations into manipulating and drying kelp. I have experimented with kelp as a material, and I am fascinated by the way kelp transforms and becomes strong as it dries out. Steel pins keep the rolls in place, once the kelp is dry the pins are held firmly. Upcycled steel was selected as a background because of its strength and the way it has started to develop a rusty patina which links to transformation and change of state. Kelp forms dense underwater forests which act as buffers to waves, slowing them down and giving protection from strong waves which results in soil erosion.</p>				

23		Tangilen 2 kelp,manipulated,pinned and dried on upcycled steel	Angela Sandwith	nfs
<p>This work was developed from explorations into manipulating and drying kelp. I have experimented with kelp as a material, and I am fascinated by the way it transforms and becomes strong as it dries out. The addition of moisture restores it back to its original state. Upcycled steel was selected as a background because of its strength and the way it has started to develop a rusty patina which links to transformation and change of state.</p>				

24		Kelp on the Shoreline Oil	John Thirlwall	£400
<p>I found the kelp washed up by the tide on the shoreline. The movement or linear quality was painted in contrast to the pebbled beach and water.</p>				

25		Receiving Watercolour	Jean Spence	£60.00
<p>The research for the Kelp exhibition involved a great deal of close looking. This was aided by macro-photography which revealed features of the kelp not readily apparent to the casual observer. My macro-images provided the material for developing a series of watercolours based on the range of patterns, colours and textures apparent in the kelp. This one is of a simple curved edge on which the light had highlighted beautiful greens and yellows.</p>				

26



Golden Kelp 1

Sandra Totty

£120

Watercolour & Gold Metal Paint

Through this kelp project, I explored kelp as both guardian and healer of our coastlines. This painting was inspired by footage from the Stronger Shores research project, where sugar kelp was cultivated under laboratory conditions and set in motion in a wave machine designed to mirror the rhythms of the sea. Watching its fronds sway in controlled currents revealed patterns both scientific and deeply poetic.

Watercolour became the natural medium to evoke the fluidity and translucence of the marine environment. Threads of gold move through the composition as a metaphor for kelp's immense yet often unseen value — its capacity to absorb pollutants, neutralise harmful chemicals, and strengthen coastal resilience.

27



Kelp 3: Over & Under

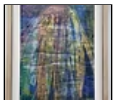
John Thirlwall

£400

Oil

I was fascinated by the intertwining and the colouration of the leaf forms of the kelp itself.

28



Kelp 1

Dawn Routledge

£40

Gelli Print

I have been playing with using actual kelp as the print material.

29



Golden Kelp II

Sandra Totty

£120

Watercolour & Liquid Metal Gold Paint

Through this kelp project, I explored kelp as both guardian and healer of our coastlines. This painting was inspired by footage from the Stronger Shores research project, where sugar kelp was cultivated under laboratory conditions and set in motion in a wave machine designed to mirror the rhythms of the sea. Watching its fronds sway in controlled currents revealed patterns both scientific and deeply poetic.

Watercolour became the natural medium to evoke the fluidity and translucence of the marine environment. Threads of gold move through the composition as a metaphor for kelp's immense yet often unseen value — its capacity to absorb pollutants, neutralise harmful chemicals, and strengthen coastal resilience.

30



Kelp, Blue and Ochre

George Browell

£80

Watercolour

I liked the contrast of the blue water and the yellow ochres of the kelp.

31



Underwater World with Kelp and Marine Life
Watercolour

George Browell

£100

A watercolour of varied marine life including kelp on the seabed.

32



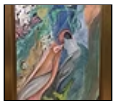
The Eternal Conflict
Oil on canvas

Bill Holmes

£290

The constant ebb and flow of tides crashing against coastal rock formations is eternal. Slow erosion changes the shape of coastlines over millennia. Nothing is constant and is forever changing.

33



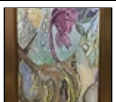
Mag Lime and Kelp
pen ink watercolour gouache on board

Neida Pearson

£160

This painting is a montage of some of my photos taken at Souter on an EDAN trip, mainly kelp, magnesian limestone rocks and other sea life.

34



When the Tide Goes Out
pen ink watercolour and gouache on board

Neida Pearson

£160

During a visit to Souter I was able to take some inspiring photos of rocks and rock pools. From these I took various images that have been put together to produce this painting of kelp and other sea life.

35



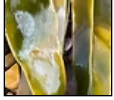
Trow Rocks
Oil on canvas

Bill Holmes

£230

The rocks stand as a barrier to the power of incoming tides. Individual rock formations slowly being separated from the main structure until they eventually become no more.

36



Souter Kelp

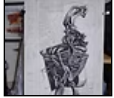
Photograph

Angela Sandwith

£50

Visiting the beach at Souter on a bitterly cold but sunny day provided ideal conditions for taking photographs. The sea had just washed over kelp lying on the shoreline. I was shocked at how bright and textured it was, light and moisture causing it to shine. I tried to quickly capture this in drawing but found the only way to truly capture the moment was with a digital camera.

37



A Viking Hold

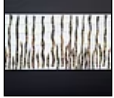
Charcoal on OS map in bespoke frame

Jac Seery Howard

£500

Having been gifted an intriguing kelp holdfast growing on a piece of Shetland granite, it was hard not to anthropomorphise it into a viking ship. Their vessels would have been a feared sight from our north east shores back in the day. The intertwined strands of the holdfast are reminiscent of Celtic knotwork, hence the title. Using a regional map as a substrate felt appropriate since it is hoped that re-instating our island's kelp forests may slow down coastal erosion.

38



Tangled Fingers (fight to caress)

Pen, cut out, collage, indentation

Danny Gilchrist

£110

I remember, as a child, swimming amongst the tangled fingers of kelp, at first a feeling that my legs and body were being caressed and then each kelp finger seemed to hold me tight and drag me down.

39



Kelp Study 2

Mixed media textiles

Lesley Wood

£45

A semi-abstract hand embroidered mixed-media collage of kelp, focusing on colour, shape and texture.

40




Kelp Study 3


Mixed media textiles


Lesley Wood


£45


A semi-abstract hand embroidered mixed-media collage of kelp, focusing on colour, shape and texture.

41		Kelp Study 1 Studio Photography	Anthony Carr	£60
<p>Before taking part in the Stronger Shores project it's fair to say that I didn't really pay all that much attention to kelp other than I'd noticed it's often seen washed up in a tangle on the beach or sometimes clinging to rocks when the tide is low. But after looking closer I noticed how there are shapes and textures that share a resemblance to the animals and creatures that also live in and around the ocean. Maybe you can make out an ankle of a Seagull or the skin of a whale, kelp even takes on a shape similar to waves or a seascape, as if it has adopted various characteristics of other sea life to give it the best possible chance to live and thrive successfully in its environment.</p>				

42		Kelp Swirl 1 Acrylic & Conte Sketching Crayon	Nasim Akhtar	£120.00
<p>Kelp Swirl 1 is inspired by the gentle, continuous movement of kelp drifting and swirling in the sea. I was drawn to the way the forms curved and folded endlessly, creating natural rhythms within the water. The rich greens shimmered beneath a bright blue sky, catching and reflecting the sunlight. This painting is an interpretation from memory, capturing the fluid motion and glistening tones I observed. The central blue form suggests depth and light within the water, while the surrounding sweeping shapes echo the calm yet constant motion of kelp carried by ocean currents.</p>				

43		Lost Villages Mixed media on paper	Jac Seery Howard	£300
<p>Look closely among the surf and you'll find the names of numerous villages 'eaten' by the sea on the Yorkshire coast since Roman times. Living 20 metres from the sea and feeling it crash against the promenade at high tide reminds me of how vulnerable we are.</p>				

44		Resting Watercolour	Jean Spence	£60
<p>The research for the Kelp exhibition involved a great deal of close looking. This was aided by macro-photography which revealed features of the kelp not readily apparent to the casual observer. My macro-images provided the material for developing a series of watercolours based on the range of patterns, colours and textures apparent in the kelp. This one is of kelp in a magnesian limestone pool. The colours of the rock added another dimension to the colours of the kelp highlighted by sunshine on the pool.</p>				

45		Connecting Watercolour	Jean Spence	£60.00
<p>The research for the Kelp exhibition involved a great deal of close looking. This was aided by macro-photography, images taken on local beach walks and visits, which revealed features of the kelp not readily apparent to the casual observer. My macro-images provided the material for developing a series of watercolours based on the range of patterns, colours and textures apparent in the kelp. The colour contrasts across connecting or overlapping kelp strands highlighted by the combination of light and water are sometimes very special.</p>				

46



Golden Light

Nasim Akhtar

£120.00

Acrylic and pencil

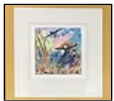
This painting was created from memory after holding a piece of kelp up against the sun and noticing the luminous golden-yellow tones that appeared as light passed through it. The work explores that fleeting moment of translucency and warmth.

Through layered acrylic and varied textures, I aimed to capture how sunlight interacted with the organic material. The textured surfaces echo the uneven, tactile quality of kelp, while smoother areas suggest shifting light.

Directional brushstrokes within selected triangular forms create a sense of movement, recalling both the motion of water and the subtle flicker of sunlight. Some shapes are intentionally semi-transparent, particularly the paler yellow sections to evoke the feeling of light filtering through the material.

Although structured through geometric triangles, the painting reflects an organic memory: a study of light, texture, and the golden glow revealed in a simple natural encounter.

47



Underwater Gold

Carol White

£120

Watercolour & metallic leaf

This painting was taken from a photograph I had of my daughter diving with her friend on holiday. I always loved the colour of her red hair against the blues of the sea water. I wanted to explore this as a painting project for myself so decided to add it to the kelp theme as it seemed appropriate. The kelp was created using metallic gold leaf. I chose this to demonstrate how precious the kelp is to our world.

48



Silvery Moonlight (Kelp Impressions)

Carol White

£85

Watercolour /Mixed Media

This little painting was inspired by a previous painting using kelp and from visits to the beach during moonlight. The image is of the cliffs and rocks covered in seaweeds and kelp and the waves lapping at the shores and the sparkle created by the light of the moon.

49



Slowing Down the White Horses

Carol White

£650

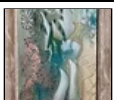
Oil

The object of the Stronger Shores organisation is to slow down and break the power of the waves to reduce the damage they cause as they hit the shores.

White Horses is a visual metaphor which arises from the white foam in the waves resembling the white manes of the horses. In Celtic Mythology they're associated with the Sea God 'Manannan Mac Lir' and 'the horses of Manannan'.

This painting shows the forming white horses at sea and then slowing as they arrive ashore. Sea Kelp under their hooves will have slowed them down.

50



Rock Pool I

Neida Pearson

£90

pen ink gouache and watercolour on board

A mixture of kelp and other plants and items found in a rock pool.

51



Rock. Pool II

Neida Pearson

£90

pen ink watercolour and gouache on board

A collection of items including kelp found in rock pools taken from a collection of my photos

52



Because of Kelp

Neida Pearson

£250

Embroidery embellished textile

I started with a silk painting that I embellished with embroidery and appliqué. My embroidery has been used to suggest the detailed sealife and kelp found in the rock pools.

53



Fiery Fronds

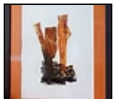
Tony Frisby

£40.00

Photography

The kelp fronds had been arranged to resemble a fan on the foreshore at Craster (thanks to fellow EDAN member Angela Sandwith for this artistic input). The enhanced colour and contrast between the red and green of the actual kelp and the blue of the background rock makes a striking and eye catching image.

54



Orange Kelp

Jac Seery Howard

£180

Acrylic gel prints on tissue paper and vintage dress patterns

Anchored to their holdfast, the blades of kelp sway in the current.

55




Coastal Erosion


Roger Gadd


£120


oil on canvas


Inspired by rocks, sea-stacks, seaweed, rain spray and breaking waves along the East Durham coast.


56		Swirls and Stones pastel	Roger Gadd	£90
<p>Kelp formations left by storm tides on the Old Beach / Red Acre Beach, Seaham in autumn 2025</p>				

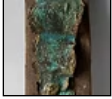
57		A Blast of Kelp oil on canvas	Roger Gadd	£90
<p>Inspired by the shapes and colours of kelp and rock pools on the Blast Beach, Seaham.</p>				


58		Kelp 2 oil on canvas	Roger Gadd	£90
<p>Inspired by kelp washed up by autumn tides on Red Acre Beach or The New Beach, Seaham.</p>				


59		Sugar Kelp Drying Oil	John Thirlwall	£650
<p>The drying leaves became colour enriched having been hung on the side of a docked boat. I introduced textures as a surface interest along with the intense colouring.</p>				


60		Sea Defence (Kelp Impressions) Watercolour & Mixed media	Carol White	£220
<p>This painting was inspired by visits to the beach during our kelp exploration. The image is of the cliffs and rocks covered in seaweeds and kelp and the waves lapping at the shores.</p>				

61		Blade on Wood Ceramic, driftwood	Jac Seery Howard	£80
<p>Another of my series of coastal villages at risk of erosion by rising sea levels. I live 20 yards from the sea and am only too aware of the implications of climate change.</p>				

62		Sugar Kelp Plaque Ceramic and driftwood	Victoria Leeks	£35.00
<p>I love adding pieces of ceramic to drift wood that has been picked up from Blast beach. I have chosen a piece of sugar kelp and some shells made from clay to form this piece.</p>				

63		Swimming Among the Kelp mixed medium on canvas	Sharron Marley	£180
<p>I chose this composition of an underwater scene depicting the important role that kelp (seaweed) plays, not only in providing a safe habitat (and food source) for the myriad of sea-life along our coast, but also the role it plays in protecting our shoreline from wave erosion, helping to 'dampen down' the waves, taking out their power (to some extent) before they crash into and wear away the coastline. I hoped to reveal to the viewer, a glimpse of the fascinating eco-system that exists beneath the waves.</p>				

64		Living Among the Kelp Mixed medium on canvas	Sharron Marley	£180
<p>I chose this composition of an underwater scene depicting the important role that kelp plays, not only in providing a safe habitat (and food source) for the myriad of sea-life along our coast, but also the role it plays in protecting our shoreline from wave erosion, helping to 'dampen down' the waves, taking out their power (to some extent) before they crash into and wear away the coastline. I hoped to reveal to the viewer, a glimpse of the fascinating eco-system that exists beneath the waves.</p>				

65		Nature's Breakwater Watercolour & Gouache	Sandra Totty	£100
<p>This painting reflects the hidden architecture of a kelp forest — a living system that quietly sustains and protects our seas. Two forms rise from the seabed, their roots anchoring them firmly below while their fronds reach upward into shifting currents. Around them, suspended particles drift like plankton or light filtering through water, suggesting the rich ecosystems kelp supports.</p> <p>Through fluid layers of blue, this piece invites the viewer to look beneath the surface and recognise kelp as a vital ally — a quiet guardian of biodiversity and a natural barrier standing between land and the rising force of the sea.</p>				

66



Marine Shapeshifter

Mixed media textiles

Lesley Wood

£185

In folk art sailors often depicted figures with seaweed such as mermaids from mythology as a way of seeking protection. The Stronger Shores project is about the protective power of seaweed and kelp. It seemed appropriate therefore to feature these powerful, mythical sea creatures who were said to have shape-shifting qualities and could be benevolent as well as malicious. My mermaid swims peacefully through the kelp holding her mermaid's purse.

67



Unseen Exchange

Long Exposure Photography

Anthony Carr

£130.00

As a landscape photographer that moved to the coast over twenty years ago I often find myself drawn to the sea and enjoy watching and capturing how it meets and interacts with the land. During my first ever visit to Craster I immediately noticed the stark contrast between the calm and peaceful Dunstanburgh Castle on a crisp October day to the constant, never ending activity of the sea always crashing against the rocks. I like to think about all the unseen activity taking place in the kelp forests under the water, a completely different world than that of above. Home to tough hardy inhabitants, all desperately clinging to the rocks and stones, thrashed around in a swirling chaos, sometimes being exposed to our world as the tides recede, giving them a chance to rest, or maybe now even more at risk from new threats or predators, but with no other choice than to wait and hope to be returned home to do it all again once the tide rolls back in.

68



Fissure

mixed media

Roger Gadd

£250

Inspired by the shapes and colours of rock pools and seaweed and also by abstract landscapes by Lewis Noble.

69



Chrysalis

Acrylic

Kabir Bydan

200

This artwork, titled "Chrysalis" communicates the idea that kelp forests, like the pupa of a butterfly, require protection to transform and endure. The work is an acrylic painting executed using a surrealistic impasto technique, employing thick, mosaic-like layers to construct both material depth and conceptual urgency. The composition depicts a vibrant underwater kelp forest inhabited by geometric fish, juxtaposed with a ruined classical temple sinking beneath a turbulent wave and a fractured, unforgiving sun. The submerging temple serves as a metaphor for the collapse of ancient, life-sustaining systems, echoing the ongoing degradation of kelp forest ecosystems. Swirling water and fragmented light suggest destabilising environmental forces such as pollution and rising sea temperatures. At the centre, a crystalline, weeping eye enclosed within a fragile bubble functions as both witness and lament, articulating sorrow, vulnerability, and ecological consciousness. Through this work, I seek to emphasise the urgency of protecting UK kelp forests, which are essential to marine biodiversity and coastal defence.

70



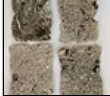
Renewal


Mix media


Victoria Leeks

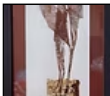
£40.00


With this piece I combined all the materials I have been working with for the Kelp exhibition. Ceramic, Tyke and printed image.


71		50/50 Kelp Paper handmade paper	Angela Sandwith	£80
<p>I have experimented with kelp as a material to gain an understanding of its properties. Some of those experiments involved processing kelp into a material for papermaking. Samples in this frame are 50% kelp and 50% waste paper. I did not use traditional papermaking equipment but developed equipment and techniques which gave an interesting surface texture with uneven edges.</p>				


72		Orange Kelp oil on board	Roger Gadd	£120
<p>The pastel drawing Swirls and Stones was from photographic references which I took on the Old Beach, Seaham. This abstract oil painting, Orange Kelp, is based on shapes and colours from parts of that pastel drawing.</p>				


73		Beached Memory Charcoal on vintage OS map	Jac Seery Howard	£380
<p>Making this observational drawing of a dried kelp holdfast mechanism I was taken to ancient shores and times when my part of the coast was 'visited' by vikings.</p>				


74		Dark Kelp Acrylic gel prints on tissue paper	Jac Seery Howard	£180
<p>Anchored by their holdfast, the blades of kelp sway in the current. I chose translucent paper to suggest the action of the sun backlighting the blades of kelp.</p>				


75		Seeded Rope Metal, glass	Ellen Dorans	£200
<p>Kelp is being researched and grown seeded onto ropes as part of the Stronger Shores project offshore from Seaham. It is intended that kelp could be a sustainable natural solution to coastal erosion in this area by slowing the force of waves toward shore. This piece was inspired by the the seeded ropes being used, and the kelp drying hung on the gallery wall.</p>				



C		Kelp Cage (small) Sculpture - metal and glass	Ellen Dorans	Not for sale
<p>Kelp is being researched as part of the Stronger Shores project offshore from Seaham. It is intended that kelp could be a sustainable natural solution to coastal erosion in this area by slowing the force of waves toward shore. The glass was kiln formed over a mould taken from partially dried kelp and is intended to show the subtle textures of the kelp shadowing on the wall behind. This light refraction is also a reference to wave refraction by the kelp lessening the strength of the waves towards the shore.</p>				



C		The Kelpie wood	John Emerson	not for sale



C		Buffer 2 Manipulated.pinned and dried kelp,acrylic display case with yellow/green light	Angela Sandwith	£200
<p>This work is a development from explorations into manipulating and drying kelp. I have experimented with kelp as a material, and I am fascinated by the way kelp transforms and becomes strong as it dries out. Kelp forms dense underwater forests which act as buffers to waves, slowing them down and giving protection from strong waves which results in soil erosion. Yellowy green light is beneficial for kelp because it matches the light wavelengths that penetrate deep into the ocean, allowing enhanced photosynthesis.</p>				



C		Small Seaweed Platter Ceramic	Victoria Leeks	£15.00
<p>The surface decoration on this platter was made with a piece of my favourite seaweed, sugar kelp . I love the colours I have used.</p>				



C		Sea Goddess Hand-made Paper Clay	Carol White	not for sale
<p>This sculpture was created as a mythical spirit which could only be found in perfect ocean conditions. Clean healthy seas with sirens, nymphs or fairies gracing our world. Of course that's just a dream or fantasy. Art is often about fantasy. The artwork is not for sale at present but may be released at a later date.</p>				



		Kelp forest Fused glass	Alison Lowery	£200
<p>Underwater scene, copper kelp.</p>				



		'Shoreline' Ceramic Pendant & Earring Set White stoneware clay	Sharron Marley	£42 for set
<p>I like to create unique pieces of jewellery and I'm currently exploring the crossover with ceramic clay and wire wrapping techniques. Using white stoneware clay to make the ceramic pendant and earring set, it was first bisque fired, decorated with Marco glazes glazes, glaze fired, and then copper wire wrapped to create the bale and unique design. 20" rose gold coloured chain, rose gold coloured ear hooks, hand crafted copper wire earring findings.</p>				



		Cleft Ceramic	Jac Seery Howard	£120
<p>Imagining, hoping, wishing... being optimistic... will we see sense in time? Will we give nature a chance to heal herself? Against the rising tides of global warming, this island is 'wrapped' in the protective arms of some abstracted sugar kelp.</p>				

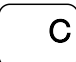

		Kelp Cage Sculpture- metal and glass	Ellen Dorans	Not for sale
<p>Kelp is being researched as part of the Stronger Shores project offshore from Seaham. It is intended that kelp could be a sustainable natural solution to coastal erosion in this area by slowing the force of waves toward shore. The glass was kiln formed over a mould taken from partially dried kelp and is intended to show the subtle textures of the kelp shadowing on the wall behind. This light refraction is also a reference to wave refraction by the kelp lessening the strength of the waves towards the shore.</p>				



		Sapphire Kelp Ceramic Mixed Media	Derek Newton Lynch	£35
<p>This piece is my tribute to the quiet, rhythmic world beneath the waves. Crafted from earthenware, it reflects the swaying resilience of kelp forests, capturing that fleeting moment when a current catches a blade and pulls it toward the light.</p> <p>I chose to move away from traditional glazes here, using airbrushing to achieve a depth of blue that feels more like moving water than static clay, finished with lacquer.</p>				


		Refraction (Wave) Sculpture - glass and found burnt wood	Ellen Dorans	£200
<p>Kelp is being researched as part of the Stronger Shores project offshore from Seaham. It is intended that kelp could be a sustainable natural solution to coastal erosion in this area by slowing the force of waves toward shore. The glass was kiln formed over a mould taken from partially dried kelp and is intended to show the subtle textures of the kelp shadowing on the wall behind. This light refraction is also a reference to wave refraction by the kelp lessening the strength of the waves towards the shore</p>				


		Held Ceramic	Jac Seery Howard	£100
<p>Kelp arms reach up to protect the land</p>				


		Clock No11 wood	John Emerson	£180.00
<p>Clock made from an ash log with bark.</p>				


		Gull on Driftwood Ceramic	Victoria Leeks	£25.00
<p>This piece of driftwood has part of a pit conveyor belt attached to it. I have added real seaweed and shells, plus ceramic shells and a ceramic seagull. I love making these pieces with bits I have picked up from the beach.</p>				


		Viking Ship Ceramic, driftwood and seaweed	Victoria Leeks	£50.00
<p>I made a viking ship a few years ago and used seaweed for the dragon on the front. This time I made a bigger one as I had a bigger piece of seaweed stalk that I bent into shape of a dragon representing the front of a viking boat.</p>				


C		Balance Ceramic on a wood base	Kay Holborn Bond	£1500
<p>Kelp has an amazing capacity to grow very fast, from a tiny speck to six foot long in just six months, and in the sea, where gravity's pull is softened, this results in a tall swaying forest of a plant, something much different to the vision we have of kelp as it lies flat and lifeless, tossed on the bare rocks. This piece attempts to allow us to imagine being in a kelp forest.</p> <p>The title of the piece and the colourations on the individual ceramic pieces stem from the knowledge that changing sea temperatures effect natural marine habitats as a result of changing pH balance.</p>				


C		Watching Seagulls	Victoria Leeks	£50.00
<p>Birds have always fascinated me, and especially a groups of seagulls. This piece was inspired by seagulls on the beach when the tide is low, pecking at detritus left on the beach after the tide goes out.</p>				


C		Large Seaweed Platter Ceramic	Victoria Leeks	£25.00
<p>I made this piece with different colours in mind. I love how the pattern of seaweed has come forward with the green glaze.</p>				


C		Tangilen 3 Upcycled steel,sheet steel	Angela Sandwith	£200
<p>This work is a development from explorations into manipulating and drying kelp. I have experimented with kelp as a material, and I am fascinated by the way kelp transforms and becomes strong as it dries out. The addition of moisture restores it back to its original state. I have used materials as metaphors in this artwork. Piles of kelp can be found on beaches after high tides or rough seas, eventually they either rot, get washed back into the sea or dry out. The round steel bar was found on local beaches and collected over a long period of time. The sheet steel has been encouraged to transform its surface through the addition of moisture,resulting in visual texture which resembles a coastline.</p>				


C		The Dance Beneath the Waves Ceramics	Jeanet Ingwersen	£65
<p>This vessel is formed with the imprint of bladderwrack kelp gathered from the shore. Moving with the tide, kelp softens the energy of the sea, creating a quiet rhythm beneath the waves. This vessel holds that moment of movement - where the sea slows and the kelp dances beneath it.</p>				


C		Clock No 7 Wood	John Emerson	£170.00
<p>Clock made from a branch of spalted ash.</p>				


C		Kelp Garden Glass	Alison Lowery	£225
<p>Fused glass square panel with wooden stand. Depiction of underwater scene with seaweed and fish, textured surface.</p>				


C		Waves Porcelain paper clay	Sharron Marley	£18
<p>I create unique pieces of jewellery. This piece was decorated in a Mayco glaze which reminds me of the ferocious waves of the sea. 20" stainless steel chain.</p>				


C		Clock No26 Wood	John Emerson	£140.00
<p>Hand made Clock made from ash</p>				


C		Villages on the Edge Ceramic, wax	Jac Seery Howard	£50
<p>So many villages lost to the sea. Maybe kelp can slow this process down?</p>				


C		Ocean Vessel Mixed Media 3D	Carol White	£45
<p>The vessel was originally an experimental piece for making kelp impressions into clay. I was pleased with the process so decided to finish it off making it into an artwork in its own right. The star on the top is to symbolise a starfish.</p>				


C		Blade Ceramic on wood	Jac Seery Howard	£80
<p>The protective blade of kelp nestles beneath the tiered houses.</p>				


C		Sea Blue Kelp White stoneware clay	Sharron Marley	£25
<p>I like to create unique pieces of jewellery and I'm currently exploring the crossover with ceramic clay and wire wrapping techniques. Using white stoneware clay to make the ceramic pendant, it was first bisque fired, decorated with Mayco glaze, fired again, and embellished with real gold lustre before the final 3rd firing. The pendant was then copper wire wrapped to create the bale and unique design. 20" rose gold coloured chain.</p>				


C		The Sea Shore Ceramic	Victoria Leeks	NFS
<p>After rough seas you often find more seaweed and other detritus on the sea shore. This piece is inspired by the images I have photographed of the sea shore.</p>				


C		'Submerged' Ceramic Pendant White stoneware clay	Sharron Marley	£30
<p>I like to create unique pieces of jewellery and I'm currently exploring the crossover with ceramic clay and wire wrapping techniques. Using white stoneware clay to make the ceramic pendant and earring set, it was first bisque fired, decorated with a combination of three Mayco glazes, glaze fired, and then wire wrapped with stainless steel wire to create the bale. 20" stainless steel coloured chain. (I liked the way the layered glazes create an underwater scene.)</p>				


	Large Seaweed Vessel Ceramic	Victoria Leeks	£ 50.00
<p>This piece is inspired by the kelp forests.</p>			


	Against the Sea Wall Wood Sculpture, kelp, coal and bone.	Ellison Lockwood	Not for sale
<p>A beachcombed piece of redwood, the shape, colour and texture of which, gave me inspiration to make something of this ready-made piece to create a natural sculpture.</p>			


	Deep Sea Kelp Porcelain paper clay	Sharron Marley	£25
<p>I like to create unique pieces of jewellery and I'm currently exploring the crossover with porcelain clay and wire wrapping techniques. I hand crafted the unique bale with copper wire and embellished the kelp design with real gold lustre. 18" rose gold plated stainless steel chain.</p>			

	Speckled Kelp Porcelain paper clay	Sharron Marley	£25
<p>I like to create unique pieces of jewellery and I'm currently exploring the crossover with porcelain clay and wire wrapping techniques. I hand crafted the unique bale and embellished the kelp design with real gold lustre. 18" rose gold plated stainless steel chain.</p>			


	Kelp Earrings White stoneware clay	Sharron Marley	£18
<p>Glazed ceramic earrings embellished with gold lustre. Rose gold coloured ear hooks.</p>			


C		Egg Wrack - Keeper of the Coast Ceramics	Jeanet Ingwersen	£135
<p>Inspired by egg wrack kelp, this ceramic work honours how kelp softens waves and preserves eroding shorelines - a silent protector in a world of disappearing coasts.</p>				


C		Golden Crescent Ceramic / mixed media	Derek Newton Lynch	£35
<p>My ceramic, which gives the impression of dawn rising within it, is made from earthenware clay, airbrushed black, white and gold with a shimmer included in it and finished with lacquer. * Note it is not glazed</p>				


C		Kelp garden with lobster Fused glass	Alison Lowery	£200 (+29.00)
<p>Underwater scene with seaweed, fish and lobster.</p>				


C		Gold Coast Porcelain paper clay	Sharron Marley	£18
<p>I create unique pieces of jewellery, and decorated this piece in Mayco glazes to emulate the sea, embellishing it with real gold lustre to give the impression of kelp. 20" gold coloured chain.</p>				


C		Clock No 23 Wood	John Emerson	£130.00
<p>Clock made form ash log with bark and cherry wood face.</p>				

C		Waves Porcelain Earrings Porcelain paper clay	Sharron Marley	£14
<p>I create unique pieces of jewellery. Hand crafted earrings decorated in a Mayco glaze which reminds me of the sea. Stainless steel ear hooks.</p>				

C		Bud Vase Ceramic	Victoria Leeks	£15.00
<p>With this vase I was interested in the way the sea moved and I wanted to try out a new glaze. The water, as it crashes to the shore has colour, but is also white at the edges, hence the darker and lighter movement on the vase.</p>				

C		Kelp Bowl I Tyvek	Victoria Leeks	NFS
<p>I love experimenting with Tyvek and this material lends itself to making the shapes and movement of kelp. I have fashioned it into a bowl</p>				

C		Rock Pool Bowl Ceramic	Victoria Leeks	£30.00
<p>This bowl was created with rock pools in mind, how seaweed, limpets and shells all collect in them. Children as well as adults are fascinated by them, including me.</p>				

C		Sea Bed White stoneware clay	Sharron Marley	£22
<p>I create unique pieces of jewellery, and made this piece from ceramic clay, using Mayco glazes to mimic the darkness of the sea bed, before embellishing it with real gold lustre to give the impression of kelp. 22" gold plated stainless steel chain.</p>				

C



Selection of wooden pots
various

Ian Heckles

**Individually
priced**

